



AGENDA

McDUFFIE COUNTY BOARD OF COMMISSIONERS

January 30, 2023 at 6:00 PM

Government Center Training Room

COMMISSIONERS' WORK SESSION

Public Hearing

1. **Wrightsboro Road Sewer Extension-Project Reduction Request.**

WELCOME & CALL TO ORDER

Chairman Newton

INVOCATION & PLEDGE OF ALLEGIANCE

DISCUSSION ITEMS

1. **Discussion Concerning Reserve Funds.**
2. **Discussion Concerning Interest Rates.**
3. **Discussion Concerning Equipment Purchase.**
4. **Discussion Concerning Chairs for Meeting Room**
5. **Discussion Concerning Proposal for Consulting Services.**
6. **Discussion Concerning Road Resurfacing.**
7. **Discussion Concerning Travel Policy.**
8. **Discussion Concerning Appointment for Board of Assessor's**

ADJOURNMENT

McDuffie County - Reserves

<u>Dates</u>	<u>Opening Balance</u>	<u>Investment</u>	<u>Borrow</u>	<u>Pay Back</u>	<u>Interest Earnings</u>	<u>Ending Balance</u>
1/1/2013	\$ 498.09					
3/1/2017		\$ 1,200,000.00				
3/7/2019		\$ 1,000,000.00				
2/20/2020		\$ 300,000.00				
7/22/2020			\$ 500,000.00			
9/22/2020			\$ 500,000.00			
12/8/2020				\$ 1,000,000.00		
9/3/2021			\$ 500,000.00			
9/15/2021			\$ 500,000.00			
12/3/2021				\$ 1,000,000.00		
1/18/2022		\$ 1,000,000.00				
7/21/2022			\$ 1,000,000.00			
8/31/2022			\$ 500,000.00			
12/14/2022				\$ 1,500,000.00	\$ 133,474.33	
	<u>\$ 498.09</u>	<u>\$ 3,500,000.00</u>	<u>\$ 3,500,000.00</u>	<u>\$ 3,500,000.00</u>	<u>\$ 133,474.33</u>	<u>\$3,633,972.42</u>

		<u>Fire/Ems Cash</u>
2023 County Budget	\$ 15,147,401.00	premium tax -County \$1,110,000.00
Monthly Allocation	\$ 1,262,283.42	fire fee \$1,782,620.00
		premium tax - City \$ 590,000.00
3 month reserves	\$ 3,786,850.25	<u>\$3,482,620.00</u>
4 month reserves	\$ 5,049,133.67	

STAFF REPORT

COMMISSIONERS' MEETING: January 30, 2023

DATE: January 25, 2023
TO: McDuffie County Board of Commissioners
FROM: Nikki Milburn, County Clerk
ISSUE: Consideration to approve purchase of 2 Freightliner Dump Trucks.

BACKGROUND: Road Department needs 2 dump trucks for the fleet. Staff plans to trade in 2 of the older trucks but vendor will not assess trade in value until closer to delivery. Trade in value will help to off set cost of purchase.

FACTS AND FINDINGS:

1. Cost of Freightliner Tandem Dump Truck with 2-way gate is \$171,363.

ALTERNATIVES:

1. The Board approves moving forward with purchase at this time.
2. The Board does not approve moving forward at this time.

FUNDING:

1. SPLOST VI

RECOMMENDATION: Staff recommends the board approve Alternative #1.

ATTACHMENTS: Quotes

Prepared for:
Nikki Milburn
MCDUFFIE COUNTY BOC
210 Railroad Street
Thomson, GA 30824
Phone: 706-597-7300



Prepared by:
Joshua Little
PEACH STATE TRUCK CENTERS
6535 CRESCENT DRIVE
NORCROSS, GA 30071
Phone: 7704495300

STATE CONTRACT

99999-SPD-SPD0000155-0007

Q U O T A T I O N

114SD PLUS CONVENTIONAL CHASSIS

SET FORWARD AXLE - TRUCK
DETROIT DD13 GEN 5 12.8L 450 HP @ 1625 RPM, 1900
GOV RPM, 1550 LB/FT @ 975 RPM
ALLISON 4500 RDS AUTOMATIC TRANSMISSION WITH
PTO PROVISION
RT-46-160 46,000# R-SERIES TANDEM REAR AXLE
HENDRICKSON RT463 @46,000# REAR SUSPENSION
DETROIT DA-F-20.0-5 20,000# FL1 71.0 KPI/3.74 DROP
SINGLE FRONT AXLE

20,000# FLAT LEAF FRONT SUSPENSION
114 INCH BBC FLAT ROOF ALUMINUM CONVENTIONAL
CAB
5525MM (218 INCH) WHEELBASE
11/32X3-1/2X10-15/16 INCH STEEL FRAME
(8.73MMX277.8MM/0.344X10.94 INCH) 120KSI
1700MM (67 INCH) REAR FRAME OVERHANG
1/4 INCH (6.35MM) C-CHANNEL INNER FRAME
REINFORCEMENT

		PER UNIT	TOTAL
VEHICLE PRICE	TOTAL # OF UNITS (1)	\$ 137,071	\$ 137,071
EXTENDED WARRANTY		\$ 405	\$ 405
16' OX DUMP MAVERICK - 2WAY		\$ 31,992	\$ 31,992
CUSTOMER PRICE BEFORE TAX		\$ 169,468	\$ 169,468

TAXES AND FEES

1% DOAS STATE CONTRACT FEE	\$ 1,695	\$ 1,695
DOC FEE	\$ 200	\$ 200

TRADE-IN

TRADE-IN ALLOWANCE	\$ (0)	\$ (0)
--------------------	--------	--------

BALANCE DUE	(LOCAL CURRENCY)	\$ 171,363	\$ 171,363
--------------------	-------------------------	-------------------	-------------------

COMMENTS:

Projected delivery on ___ / ___ / ___ provided the order is received before ___ / ___ / ___.

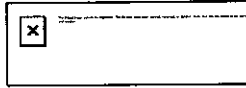
APPROVAL:

Please indicate your acceptance of this quotation by signing below:

Customer: X _____ Date: ___ / ___ / ___.



Prepared for:
Nikki Milburn
MCDUFFIE COUNTY BOC
210 Railroad Street
Thomson, GA 30824
Phone: 706-597-7300



Prepared by:
Joshua Little
PEACH STATE TRUCK
CENTERS
6535 CRESCENT DRIVE
NORCROSS, GA 30071
Phone: 7704495300

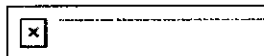
A proposal for
MCDUFFIE COUNTY BOC

Prepared by
PEACH STATE TRUCK CENTERS
Joshua Little

Jan 25, 2023

Freightliner 114SD Plus

Components shown may not reflect all spec'd options and are not to scale



Prepared for:
Nikki Milburn
MCDUFFIE COUNTY BOC
210 Railroad Street
Thomson, GA 30824
Phone: 706-597-7300



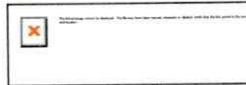
Prepared by:
Joshua Little
PEACH STATE TRUCK
CENTERS
6535 CRESCENT DRIVE
NORCROSS, GA 30071
Phone: 7704495300

SPECIFICATION PROPOSAL

Description	Weight Front	Weight Rear
Price Level		
SD PRL-27D (EFF:MY24 ORDERS)		
Data Version		
SPECPRO21 DATA RELEASE VER 026		
Vehicle Configuration		
114SD PLUS CONVENTIONAL CHASSIS	7,934	6,476
2024 MODEL YEAR SPECIFIED		
SET FORWARD AXLE - TRUCK		
TRAILER TOWING PROVISION AT END OF FRAME WITH SAE J560	10	10
LH PRIMARY STEERING LOCATION		
General Service		
TRUCK/TRAILER CONFIGURATION		
DOMICILED, USA 50 STATES (INCLUDING CALIFORNIA AND CARB OPT-IN STATES)		
CONSTRUCTION SERVICE		
GOVERNMENT BUSINESS SEGMENT		
DIRT/SAND/ROCK COMMODITY		
TERRAIN/DUTY: 100% (ALL) OF THE TIME, IN TRANSIT, IS SPENT ON PAVED ROADS		
MAXIMUM 8% EXPECTED GRADE		
SMOOTH CONCRETE OR ASPHALT PAVEMENT - MOST SEVERE IN-TRANSIT (BETWEEN SITES) ROAD SURFACE		
FREIGHTLINER LEVEL II WARRANTY		
EXPECTED FRONT AXLE(S) LOAD : 20000.0 lbs		
EXPECTED REAR DRIVE AXLE(S) LOAD : 46000.0 lbs		
EXPECTED GROSS VEHICLE WEIGHT CAPACITY : 66000.0 lbs		
EXPECTED GROSS COMBINATION WEIGHT : 80000.0 lbs		



Prepared for:
Nikki Milburn
MCDUFFIE COUNTY BOC
210 Railroad Street
Thomson, GA 30824
Phone: 706-597-7300

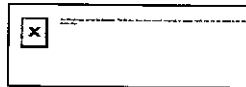


Prepared by:
Joshua Little
PEACH STATE TRUCK
CENTERS
6535 CRESCENT DRIVE
NORCROSS, GA 30071
Phone: 7704495300

Description	Weight Front	Weight Rear
Truck Service		
END DUMP BODY		
OX BODIES (TBEI)		
Engine		
DETROIT DD13 GEN 5 12.8L 450 HP @ 1625 RPM, 1900 GOV RPM, 1550 LB/FT @ 975 RPM		
Electronic Parameters		
65 MPH ROAD SPEED LIMIT		
CRUISE CONTROL SPEED LIMIT SAME AS ROAD SPEED LIMIT		
FLEET MANAGEMENT - DAILY ENGINE USAGE ENABLED		
PTO MODE ENGINE RPM LIMIT - 900 RPM		
PTO RPM CONTROL WITH STEERING WHEEL SWITCHES		
PTO MODE CANCEL VEHICLE SPEED - 7 MPH		
PTO GOVERNOR RAMP RATE - 250 RPM PER SECOND		
FUEL DOSING OF AFTERTREATMENT ENABLED IN PTO MODE-CLEANS HYDROCARBONS AT HIGH TEMPERATURES ONLY		
ONE REMOTE PTO SPEED		
PTO SPEED 1 SETTING - 900 RPM		
SOFT CRUISE CONTROL ENABLED		
PTO MINIMUM RPM - 600		
ENABLE DPF REGEN ZONE 1 WITH AUTO ENGINE RPM ELEVATE FOR EXTENDED IDLE		
PTO 1, DASH SWITCH, ENGAGE BEFORE DRIVING		
Engine Equipment		
2010 EPA/CARB/GHG21 CONFIGURATION		
2008 CARB EMISSION CERTIFICATION - CLEAN IDLE (INCLUDES 6X4 INCH LABEL ON LOWER FORWARD CORNER OF DRIVER DOOR)		
STANDARD OIL PAN		
ENGINE MOUNTED OIL CHECK AND FILL		
SIDE OF HOOD AIR INTAKE WITH DONALDSON HIGH CAPACITY AIR CLEANER WITH SAFETY ELEMENT, FIREWALL MOUNTED		

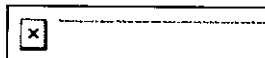


Prepared for:
Nikki Milburn
MCDUFFIE COUNTY BOC
210 Railroad Street
Thomson, GA 30824
Phone: 706-597-7300



Prepared by:
Joshua Little
PEACH STATE TRUCK
CENTERS
6535 CRESCENT DRIVE
NORCROSS, GA 30071
Phone: 7704495300

Description	Weight Front	Weight Rear
DR 12V 160 AMP 28-SI QUADRAMOUNT PAD ALTERNATOR WITH REMOTE BATTERY VOLT SENSE		
(3) DTNA GENUINE, FLOODED STARTING, MIN 3000CCA, 555RC, THREADED STUD BATTERIES BATTERY BOX FRAME MOUNTED STANDARD BATTERY JUMPERS SINGLE BATTERY BOX FRAME MOUNTED LH SIDE BACK OF CAB WIRE GROUND RETURN FOR BATTERY CABLES WITH ADDITIONAL FRAME GROUND RETURN NON-POLISHED BATTERY BOX COVER POSITIVE LOAD DISCONNECT WITH CAB MOUNTED CONTROL SWITCH MOUNTED OUTBOARD DRIVER SEAT	2	
POSITIVE AND NEGATIVE POSTS FOR JUMPSTART LOCATED ON FRAME NEXT TO STARTER	2	
PROGRESSIVE LOW VOLTAGE DISCONNECT AT 12.3 VOLTS FOR DESIGNATED CIRCUITS BW MODEL FE-921 19.0 CFM SINGLE CYLINDER AIR COMPRESSOR WITH SAFETY VALVE ELECTRONIC ENGINE INTEGRAL SHUTDOWN PROTECTION SYSTEM JACOBS COMPRESSION BRAKE		
RH OUTBOARD UNDER STEP MOUNTED HORIZONTAL AFTERTREATMENT SYSTEM ASSEMBLY WITH RH B-PILLAR MOUNTED VERTICAL TAILPIPE ENGINE AFTERTREATMENT DEVICE, AUTOMATIC OVER THE ROAD REGENERATION AND VIRTUAL REGENERATION REQUEST SWITCH IN CLUSTER 11 FOOT 00 INCH (132 INCH+0/-5.9 INCH) EXHAUST SYSTEM HEIGHT RH CURVED VERTICAL TAILPIPE B-PILLAR MOUNTED ROUTED FROM STEP 13 GALLON DIESEL EXHAUST FLUID TANK 100 PERCENT DIESEL EXHAUST FLUID FILL STANDARD DIESEL EXHAUST FLUID PUMP MOUNTING LH MEDIUM DUTY STANDARD DIESEL EXHAUST FLUID TANK LOCATION STANDARD DIESEL EXHAUST FLUID TANK CAP	30	25



Prepared for:
Nikki Milburn
MCDUFFIE COUNTY BOC
210 Railroad Street
Thomson, GA 30824
Phone: 706-597-7300



Prepared by:
Joshua Little
PEACH STATE TRUCK
CENTERS
6535 CRESCENT DRIVE
NORCROSS, GA 30071
Phone: 7704495300

Description	Weight Front	Weight Rear
ALUMINUM AFTERTREATMENT DEVICE/MUFFLER/TAILOPIPE SHIELD(S)		
AIR POWERED ON/OFF ENGINE FAN CLUTCH		
AUTOMATIC FAN CONTROL WITHOUT DASH SWITCH, NON ENGINE MOUNTED		
DDC SUPPLIED ENGINE MOUNTED FUEL FILTER/FUEL WATER SEPARATOR WITH WATER-IN-FUEL INDICATOR		
FULL FLOW OIL FILTER		
1400 SQUARE INCH VOCATIONAL RADIATOR	-15	
ANTIFREEZE TO -34F, OAT (NITRITE AND SILICATE FREE) EXTENDED LIFE COOLANT		
GATES BLUE STRIPE COOLANT HOSES OR EQUIVALENT		
CONSTANT TENSION HOSE CLAMPS FOR COOLANT HOSES		
HDEP FIXED RATIO COOLANT PUMP AND RADIATOR DRAIN VALVE		
PHILLIPS-TEMRO 1500 WATT/115 VOLT BLOCK HEATER	4	
BLACK PLASTIC ENGINE HEATER RECEPTACLE MOUNTED UNDER LH DOOR		
MITSUBISHI 12V MOD 3.175-DP60 STARTER WITH INTEGRATED MAGNETIC SWITCH		

Transmission

ALLISON 4500 RDS AUTOMATIC TRANSMISSION WITH PTO PROVISION	260	100
---	-----	-----

Transmission Equipment

ALLISON VOCATIONAL PACKAGE 223 -
AVAILABLE ON 3000/4000 PRODUCT FAMILIES
WITH VOCATIONAL MODELS RDS, HS, MH AND
TRV

ALLISON VOCATIONAL RATING FOR ON/OFF
HIGHWAY APPLICATIONS AVAILABLE WITH ALL
PRODUCT FAMILIES

PRIMARY MODE GEARS, LOWEST GEAR 1,
START GEAR 1, HIGHEST GEAR 6, AVAILABLE
FOR 3000/4000 PRODUCT FAMILIES ONLY

SECONDARY MODE GEARS, LOWEST GEAR 1,
START GEAR 1, HIGHEST GEAR 6, AVAILABLE
FOR 3000/4000 PRODUCT FAMILIES ONLY

PRIMARY SHIFT SCHEDULE RECOMMENDED BY
DTNA AND ALLISON, THIS DEFINED BY ENGINE
AND VOCATIONAL USAGE



Prepared for:
Nikki Milburn
MCDUFFIE COUNTY BOC
210 Railroad Street
Thomson, GA 30824
Phone: 706-597-7300



Prepared by:
Joshua Little
PEACH STATE TRUCK
CENTERS
6535 CRESCENT DRIVE
NORCROSS, GA 30071
Phone: 7704495300

Description	Weight Front	Weight Rear
SECONDARY SHIFT SCHEDULE RECOMMENDED BY DTNA AND ALLISON, THIS DEFINED BY ENGINE AND VOCATIONAL USAGE		
PRIMARY SHIFT SPEED RECOMMENDED BY DTNA AND ALLISON, THIS DEFINED BY ENGINE AND VOCATIONAL USAGE		
SECONDARY SHIFT SPEED RECOMMENDED BY DTNA AND ALLISON, THIS DEFINED BY ENGINE AND VOCATIONAL USAGE		
FUEL SENSE 2.0 DISABLED - PERFORMANCE - TABLE BASED		
DRIVER SWITCH INPUT - DEFAULT - NO SWITCHES		
DIRECTION CHANGE ENABLED WITH MULTIPLEXED SERVICE BRAKES - ALLISON 5TH GEN TRANSMISSIONS		
QUICKFIT BODY LIGHTING CONNECTOR UNDER CAB, WITH BLUNTCUTS		
ELECTRONIC TRANSMISSION WIRING TO CUSTOMER INTERFACE CONNECTOR		
CUSTOMER INSTALLED CHELSEA 870 SERIES PTO		
PTO MOUNTING, LH SIDE OF MAIN TRANSMISSION ALLISON		
MAGNETIC PLUGS, ENGINE DRAIN, TRANSMISSION DRAIN, AXLE(S) FILL AND DRAIN		
PUSH BUTTON ELECTRONIC SHIFT CONTROL, DASH MOUNTED		
TRANSMISSION PROGNOSTICS - ENABLED 2013		
WATER TO OIL TRANSMISSION COOLER, FRAME MOUNTED		
TRANSMISSION OIL CHECK AND FILL WITH ELECTRONIC OIL LEVEL CHECK		
SYNTHETIC TRANSMISSION FLUID (TES-295 COMPLIANT)		

Front Axle and Equipment

DETROIT DA-F-20.0-5 20,000# FL1 71.0 KPI/3.74 DROP SINGLE FRONT AXLE	190
MERITOR 16.5X6 Q+ CAST SPIDER CAM FRONT BRAKES, DOUBLE ANCHOR, FABRICATED SHOES	10
NON-ASBESTOS FRONT BRAKE LINING	
CAST IRON OUTBOARD FRONT BRAKE DRUMS	
FRONT OIL SEALS	



Prepared for:
Nikki Milburn
MCDUFFIE COUNTY BOC
210 Railroad Street
Thomson, GA 30824
Phone: 706-597-7300



Prepared by:
Joshua Little
PEACH STATE TRUCK
CENTERS
6535 CRESCENT DRIVE
NORCROSS, GA 30071
Phone: 7704495300

Description	Weight Front	Weight Rear
ASPHALT SPREADER CLEARANCE REAR BRAKE GEOMETRY CAST IRON OUTBOARD REAR BRAKE DRUMS REAR OIL SEALS WABCO TRISTOP D LONGSTROKE 2-DRIVE AXLE SPRING PARKING CHAMBERS HALDEX AUTOMATIC REAR SLACK ADJUSTERS CURRENT AVAILABLE SYNTHETIC 75W-90 REAR AXLE LUBE STANDARD REAR AXLE BREATHER(S)		
Rear Suspension		
HENDRICKSON RT463 @46,000# REAR SUSPENSION		750
HENDRICKSON RT/RTE - 7.19" SADDLE STANDARD AXLE SEATS IN AXLE CLAMP GROUP 52 INCH AXLE SPACING STEEL BEAMS AND BRONZE CENTER BUSHINGS WITH BAR PIN ADJUSTABLE END CONNECTIONS FORE/AFT CONTROL RODS		
Brake System		
WABCO 4S/4M ABS WITH TRACTION CONTROL REINFORCED NYLON, FABRIC BRAID AND WIRE BRAID CHASSIS AIR LINES FIBER BRAID PARKING BRAKE HOSE STANDARD BRAKE SYSTEM VALVES STANDARD AIR SYSTEM PRESSURE PROTECTION SYSTEM STD U.S. FRONT BRAKE VALVE RELAY VALVE WITH 5-8 PSI CRACK PRESSURE, NO REAR PROPORTIONING VALVE WABCO SYSTEM SAVER HP WITH INTEGRAL AIR GOVERNOR AND HEATER AIR DRYER FRAME MOUNTED STEEL AIR BRAKE RESERVOIRS PULL CABLES ON ALL AIR RESERVOIR(S)		
Trailer Connections		
AIR CONNECTIONS TO END OF FRAME WITH GLAD HANDS FOR TRUCK AND NO DUST COVERS		



Prepared for:
Nikki Milburn
MCDUFFIE COUNTY BOC
210 Railroad Street
Thomson, GA 30824
Phone: 706-597-7300



Prepared by:
Joshua Little
PEACH STATE TRUCK
CENTERS
6535 CRESCENT DRIVE
NORCROSS, GA 30071
Phone: 7704495300

Description	Weight Front	Weight Rear
PRIMARY CONNECTOR/RECEPTACLE WIRED FOR SEPARATE STOP/TURN, ABS CENTER PIN POWERED THROUGH IGNITION SAE J560 7-WAY PRIMARY TRAILER CABLE RECEPTACLE MOUNTED END OF FRAME		
Wheelbase & Frame		
5525MM (218 INCH) WHEELBASE		
11/32X3-1/2X10-15/16 INCH STEEL FRAME (8.73MMX277.8MM/0.344X10.94 INCH) 120KSI	160	50
1/4 INCH (6.35MM) C-CHANNEL INNER FRAME REINFORCEMENT	165	385
1700MM (67 INCH) REAR FRAME OVERHANG FRAME OVERHANG RANGE: 61 INCH TO 70 INCH CALC'D BACK OF CAB TO REAR SUSP C/L (CA) : 134.06 in CALCULATED EFFECTIVE BACK OF CAB TO REAR SUSPENSION C/L (CA) : 131.06 in CALC'D FRAME LENGTH - OVERALL : 301.39 in CALCULATED FRAME SPACE LH SIDE : 37.38 in CALCULATED FRAME SPACE RH SIDE : 46.35 in SQUARE END OF FRAME FRONT CLOSING CROSSMEMBER STANDARD WEIGHT ENGINE CROSSMEMBER STANDARD MIDSHIP #1 CROSSMEMBER(S) STANDARD REARMOST CROSSMEMBER STANDARD SUSPENSION CROSSMEMBER		
Chassis Equipment		
16.5 INCH PAINTED STEEL STRAIGHT BUMPER REMOVABLE FRONT TOW/RECOVERY DEVICE, STORED ON CHASSIS FRAME BUMPER MOUNTING FOR SINGLE LICENSE PLATE GRADE 8 THREADED HEX HEADED FRAME FASTENERS EXTERIOR HARNESES WRAPPED IN ABRASION TAPE CLEAR FRAME RAILS FROM BACK OF CAB TO FRONT REAR SUSPENSION BRACKET, BOTH RAILS OUTBOARD	15	



Prepared for:
Nikki Milburn
MCDUFFIE COUNTY BOC
210 Railroad Street
Thomson, GA 30824
Phone: 706-597-7300

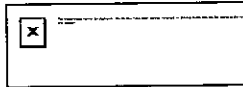


Prepared by:
Joshua Little
PEACH STATE TRUCK
CENTERS
6535 CRESCENT DRIVE
NORCROSS, GA 30071
Phone: 7704495300

Description	Weight Front	Weight Rear
Fuel Tanks		
100 GALLON/378 LITER ALUMINUM FUEL TANK - LH	20	
25 INCH DIAMETER FUEL TANK(S) PLAIN ALUMINUM/PAINTED STEEL FUEL/HYDRAULIC TANK(S) WITH PAINTED BANDS FUEL TANK(S) FORWARD PLAIN STEP FINISH FUEL TANK CAP(S) DAVCO 487 FUEL/WATER SEPARATOR WITH ESOC AND 12 VOLT PREHEATER EQUIFLO INBOARD FUEL SYSTEM HIGH TEMPERATURE REINFORCED NYLON FUEL LINE FUEL COOLER	15	
	10	
Tires		
MICHELIN X MULTI HLZ 385/65R22.5 20 PLY RADIAL FRONT TIRES	124	
MICHELIN XDN2 11R22.5 16 PLY RADIAL REAR TIRES		160
Hubs		
CONMET PRESET PLUS PREMIUM IRON FRONT HUBS CONMET PRESET PLUS PREMIUM IRON REAR HUBS		
Wheels		
MAXION WHEELS 10035 22.5X12.25 10-HUB PILOT 4.75 INSET 5-HAND STEEL DISC FRONT WHEELS	102	
MAXION WHEELS 90260 22.5X8.25 10-HUB PILOT 2-HAND HD STEEL DISC REAR WHEELS FRONT WHEEL MOUNTING NUTS REAR WHEEL MOUNTING NUTS		160
Cab Exterior		
114 INCH BBC FLAT ROOF ALUMINUM CONVENTIONAL CAB AIR CAB MOUNTING NONREMOVABLE BUGSCREEN MOUNTED BEHIND GRILLE FRONT FENDERS		

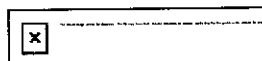


Prepared for:
Nikki Milburn
MCDUFFIE COUNTY BOC
210 Railroad Street
Thomson, GA 30824
Phone: 706-597-7300



Prepared by:
Joshua Little
PEACH STATE TRUCK
CENTERS
6535 CRESCENT DRIVE
NORCROSS, GA 30071
Phone: 7704495300

Description	Weight Front	Weight Rear
3-1/2 INCH FENDER EXTENSIONS	15	
SAFETY YELLOW LH AND RH INTERIOR GRAB HANDLES AND LH AND RH EXTERIOR GRAB HANDLES WITH SINGLE RUBBER INSERT		
STATIONARY BLACK GRILLE		
BLACK HOOD MOUNTED AIR INTAKE GRILLE		
FIBERGLASS HOOD		
DUAL 24 INCH ROUND POLISHED ALUMINUM AIR HORNS ROOF MOUNTED	4	
DUAL ELECTRIC HORNS		
DUAL HORN SHIELDS		
REAR LICENSE PLATE MOUNT END OF FRAME		
HALOGEN COMPOSITE HEADLAMPS WITH BLACK BEZELS		
LED AERODYNAMIC MARKER LIGHTS		
HEADLIGHTS ON WITH WIPERS, NO DAYTIME RUNNING LIGHTS		
INTEGRAL STOP/TAIL/BACKUP LIGHTS		
STANDARD FRONT TURN SIGNAL LAMPS		
DUAL WEST COAST MOLDED-IN COLOR HEATED MIRRORS WITH LH AND RH REMOTE		
DOOR MOUNTED MIRRORS		
102 INCH EQUIPMENT WIDTH		
LH AND RH 8 INCH MOLDED-IN COLOR CONVEX MIRRORS MOUNTED UNDER PRIMARY MIRRORS		
RH DOWN VIEW MIRROR		
RH AND LH 8 INCH STAINLESS STEEL FENDER MOUNTED CONVEX MIRRORS WITH TRIPOD BRACKETS	8	
STANDARD SIDE/REAR REFLECTORS		
RH AFTERTREATMENT SYSTEM CAB ACCESS WITH PLAIN SHIELDING		
63X14 INCH TINTED REAR WINDOW		
TINTED DOOR GLASS LH AND RH WITH TINTED OPERATING WING WINDOWS		
RH AND LH ELECTRIC POWERED WINDOWS	4	4
LOWER RH DOOR WINDOW WITH FRESNEL LENS	7	
1-PIECE SOLAR GREEN GLASS WINDSHIELD		



Prepared for:
 Nikki Milburn
 MCDUFFIE COUNTY BOC
 210 Railroad Street
 Thomson, GA 30824
 Phone: 706-597-7300



Prepared by:
 Joshua Little
 PEACH STATE TRUCK
 CENTERS
 6535 CRESCENT DRIVE
 NORCROSS, GA 30071
 Phone: 7704495300

Description	Weight Front	Weight Rear
8 LITER (2 GAL) WINDSHIELD WASHER RESERVOIR, CAB MOUNTED, WITH FLUID LEVEL INDICATOR		
Cab Interior		
RUGGED TRIM PACKAGE		
GRAY & CARBON VINYL INTERIOR "RUGGED"		
CARBON WITH PREMIUM GUNMETAL ACCENT (RUGGED)		
MOLDED PLASTIC DOOR PANEL		
MOLDED PLASTIC DOOR PANEL		
BLACK MATS WITH SINGLE INSULATION		
ASH CUP AND (1)LIGHTER, (1)12V POWER OUTLET, (1)DASH MTD DUAL USB-C OUTLET		
FORWARD ROOF MOUNTED CONSOLE		
LH DOOR STORAGE POCKET		
DIGITAL ALARM CLOCK IN DRIVER DISPLAY		
(2) CUP HOLDERS LH AND RH DASH		
M2/SD DASH		
2-1/2 LB. FIRE EXTINGUISHER	5	
HEATER, DEFROSTER AND AIR CONDITIONER		
STANDARD HVAC DUCTING		
MAIN HVAC CONTROLS WITH RECIRCULATION SWITCH		
STANDARD HEATER PLUMBING		
VALEO HEAVY DUTY A/C REFRIGERANT COMPRESSOR		
BINARY CONTROL, R-134A		
STANDARD INSULATION		
SOLID-STATE CIRCUIT PROTECTION AND FUSES		
12V NEGATIVE GROUND ELECTRICAL SYSTEM		
STANDARD LED CAB LIGHTING		
DOOR LOCKS AND IGNITION SWITCH KEYED THE SAME		
KEY QUANTITY OF 4		
LH AND RH ELECTRIC DOOR LOCKS		
TRIANGULAR REFLECTORS WITHOUT FLARES	10	
BASIC ISRINGHAUSEN HIGH BACK AIR SUSPENSION DRIVERS SEAT WTIH MECHANICAL LUMBAR AND INTEGRATED CUSHION EXTENSION	30	



Prepared for:
Nikki Milburn
MCDUFFIE COUNTY BOC
210 Railroad Street
Thomson, GA 30824
Phone: 706-597-7300



Prepared by:
Joshua Little
PEACH STATE TRUCK
CENTERS
6535 CRESCENT DRIVE
NORCROSS, GA 30071
Phone: 7704495300

Description	Weight Front	Weight Rear
2 MAN TOOL BOX MID BACK NON SUSPENSION PASSENGER SEAT, SEATS INC	20	
LH AND RH INTEGRAL DOOR PANEL ARMRESTS		
VINYL WITH VINYL INSERT DRIVER SEAT		
VINYL WITH VINYL INSERT PASSENGER SEAT		
HIGH VISIBILITY ORANGE SEAT BELTS		
ADJUSTABLE TILT AND TELESCOPING STEERING COLUMN	10	
4-SPOKE 18 INCH (450MM) LEATHER WRAPPED STEERING WHEEL WITH CHROME SWITCH BEZELS		
DRIVER AND PASSENGER INTERIOR SUN VISORS		

Instruments & Controls

DIGITAL PANEL LAMP DIMMER SWITCH IN
DRIVER DISPLAY

ELECTRONIC ACCELERATOR CONTROL

NO INSTRUMENT PANEL-DRIVER

FULLY CONFIGURABLE CENTER INSTRUMENT
PANELS

BRIGHT ARGENT FINISH GAUGE BEZELS

LOW AIR PRESSURE INDICATOR LIGHT AND
AUDIBLE ALARM

DUAL NEEDLE PRIMARY AND SECONDARY AIR
PRESSURE GAUGE

DASH MOUNTED AIR RESTRICTION INDICATOR
WITH GRADUATIONS

CONSTANT 107 DECIBELS BACKUP ALARM

ELECTRONIC CRUISE CONTROL WITH
CONTROLS ON STEERING WHEEL SPOKES

KEY OPERATED IGNITION SWITCH AND
INTEGRAL START POSITION; 4 POSITION
OFF/RUN/START/ACCESSORY

PREMIUM INSTRUMENT CLUSTER WITH 5.0
INCH TFT COLOR DISPLAY

HEAVY DUTY ONBOARD DIAGNOSTICS
INTERFACE CONNECTOR LOCATED BELOW LH
DASH

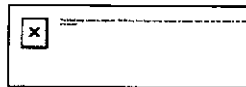
2 INCH ELECTRIC FUEL GAUGE

FUEL FILTER RESTRICTION INDICATOR

ENGINE REMOTE INTERFACE FOR REMOTE
THROTTLE



Prepared for:
 Nikki Milburn
 MCDUFFIE COUNTY BOC
 210 Railroad Street
 Thomson, GA 30824
 Phone: 706-597-7300



Prepared by:
 Joshua Little
 PEACH STATE TRUCK
 CENTERS
 6535 CRESCENT DRIVE
 NORCROSS, GA 30071
 Phone: 7704495300

Description	Weight Front	Weight Rear
QUICKFIT POWERTRAIN INTERFACE CONNECTOR UNDER CAB WITH BLUNTCUTS		
QUICKFIT PROGRAMMABLE INTERFACE CONNECTOR(S) UNDER CAB WITH BLUNTCUTS		
ENGINE REMOTE INTERFACE CONNECTOR AT POWERTRAIN INTERFACE CONNECTOR		
ELECTRICAL ENGINE COOLANT TEMPERATURE GAUGE		
DIGITAL ENGINE OIL TEMPERATURE IN DRIVER DISPLAY		
2 INCH TRANSMISSION OIL TEMPERATURE GAUGE		
ELECTRONIC OUTSIDE TEMPERATURE SENSOR DISPLAY IN DRIVER MESSAGE CENTER		
ENGINE AND TRIP HOUR METERS INTEGRAL WITHIN DRIVER DISPLAY		
PTO CONTROLS FOR ENHANCED VEHICLE ELECTRIC/ELECTRONIC ARCHITECTURE		
ELECTRIC ENGINE OIL PRESSURE GAUGE		
NO OVERHEAD INSTRUMENT PANEL		
AM/FM/WB WORLD TUNER RADIO WITH BLUETOOTH, USB AND AUXILIARY INPUTS, J1939	10	
DASH MOUNTED RADIO		
(2) RADIO SPEAKERS IN CAB		
AM/FM ANTENNA MOUNTED ON FORWARD LH ROOF		
STANDARD RADIO WIRING WITH STEERING WHEEL CONTROLS		
ELECTRONIC MPH SPEEDOMETER WITH SECONDARY KPH SCALE, WITHOUT ODOMETER		
STANDARD VEHICLE SPEED SENSOR		
ELECTRONIC 3000 RPM TACHOMETER		
DETROIT CONNECT PLATFORM HARDWARE		
3 YEARS DETROIT CONNECT BASE PACKAGE (FEATURES VARY BY MODEL) DETROIT CONNECT PLATFORM		
TMC RP1226 ACCESSORY CONNECTOR LOCATED BEHIND PASSENGER SIDE REMOVEABLE DASH PANEL		
IGNITION SWITCH CONTROLLED ENGINE STOP		



Prepared for:
 Nikki Milburn
 MCDUFFIE COUNTY BOC
 210 Railroad Street
 Thomson, GA 30824
 Phone: 706-597-7300



Prepared by:
 Joshua Little
 PEACH STATE TRUCK
 CENTERS
 6535 CRESCENT DRIVE
 NORCROSS, GA 30071
 Phone: 7704495300

	Description	Weight Front	Weight Rear
	PRE-TRIP INSPECTION FEATURE FOR EXTERIOR LAMPS AND SERVICE BRAKES (1) OVERHEAD MOUNTED LANYARD CONTROL FOR DRIVER AIR HORN BW TRACTOR PROTECTION VALVE TRAILER HAND CONTROL BRAKE VALVE DIGITAL VOLTAGE DISPLAY INTEGRAL WITH DRIVER DISPLAY SINGLE ELECTRIC WINDSHIELD WIPER MOTOR WITH DELAY PROGRAMMED TO SLOWEST SPEED WITH PARK BRAKE SET ROTARY HEADLAMP SWITCH, MARKER LIGHTS/HEADLIGHTS SWITCH WITH PULL OUT FOR OPTIONAL FOG/ROAD LAMPS TWO VALVE PARKING BRAKE SYSTEM WITH WARNING INDICATOR SELF CANCELING TURN SIGNAL SWITCH WITH DIMMER, HEADLAMP FLASH, WASH/WIPE/INTERMITTENT INTEGRAL ELECTRONIC TURN SIGNAL FLASHER WITH 40 AMP (20 AMP PER SIDE) TRAILER LAMP CAPACITY		
Design			
	PAINT: ONE SOLID COLOR		
Color			
	CAB COLOR A: L0006EY WHITE ELITE EY BLACK, HIGH SOLIDS POLYURETHANE CHASSIS PAINT POWDER WHITE (N0006EA) FRONT WHEELS/RIMS (PKWHT21, TKWHT21, W, TW) POWDER WHITE (N0006EA) REAR WHEELS/RIMS (PKWHT21, TKWHT21, W, TW) STANDARD BLACK BUMPER PAINT STANDARD E COAT/UNDERCOATING		
Certification / Compliance			
	U.S. FMVSS CERTIFICATION, EXCEPT SALES CABS AND GLIDER KITS		
Sales Programs			
	SD QUOTE SALES PROGRAM		



Prepared for:
Nikki Milburn
MCDUFFIE COUNTY BOC
210 Railroad Street
Thomson, GA 30824
Phone: 706-597-7300



Prepared by:
Joshua Little
PEACH STATE TRUCK
CENTERS
6535 CRESCENT DRIVE
NORCROSS, GA 30071
Phone: 7704495300

TOTAL VEHICLE SUMMARY

Weight Summary

	Weight Front	Weight Rear	Total Weight
Factory Weight ⁺	9626 lbs	8598 lbs	18224 lbs
Dealer Installed Options	0 lbs	0 lbs	0 lbs
Total Weight ⁺	9626 lbs	8598 lbs	18224 lbs

Extended Warranty

TOWING: 1 YEAR/UNLIMITED MILES/KM EXTENDED TOWING
COVERAGE \$1200 CAP FEX APPLIES

Dealer Installed Options

	Weight Front	Weight Rear
16' OX MAVERICK DUMP	0	0
Total Dealer Installed Options	0 lbs	0 lbs

(+) Weights shown are estimates only.

If weight is critical, contact Customer Application Engineering.

(***) All cost increases for major components (Engines, Transmissions, Axles, Front and Rear Tires) and government mandated requirements, tariffs, and raw material surcharges will be passed through and added to factory invoices.



STAFF REPORT

COMMISSIONERS' MEETING: January 30, 2023

DATE: January 25, 2023
TO: McDuffie County Board of Commissioners
FROM: Nikki Milburn, County Clerk
ISSUE: Consideration to approve chair options for Government Center Meeting Room.

BACKGROUND: The chairs in the downstairs meeting room are starting to show wear from use. Staff has been able to find a local vender to give more options for chair replacement.

FACTS AND FINDINGS:

1. Cost to reupholster existing chairs (100) in new fabric is \$23,330.00 which includes pick up, installation and delivery.
2. Cost of new chairs (100) in new fabric is \$27,433.73 under state contract pricing.

ALTERNATIVES:

1. The Board approves moving forward with option #1 at this time.
2. The Board does not approve moving forward at this time.

FUNDING:

1. General Fund

RECOMMENDATION: Staff recommends the board approve Alternative #1.

ATTACHMENTS: Quotes

PROPOSAL



www.weinbergersbusiness.com

Proposed To:

Nikki Milburn
McDuffie County
210 Railroad Street
Thomson, GA 30824
706.597.7300

WEINBERGER'S BUSINESS INTERIORS

Sales Person: Jennifer Duncan
Project:

3023 Riverwatch Parkway
Suite G
Augusta, GA 30907
Phone: (706) 922-1374
Fax: (706) 922-1377

1/25/2023

Line #	Mfg	Qty	Part Number	Part Description	Sell	Ext Sell
1	REUPH.	110	LABOR		\$ 130.50	\$ 14,355.00
2	MOMTE X	110	COVER CLOTH	HICKORY	\$ 72.50	\$ 7,975.00
					Subtotal	\$ 22,330.00
					Momentum Freight	\$ 70.88
					Design Service	\$ 0.00
					Installation (Pick Up Existing Chairs, Deliver to Reupholstery, Deliver to End User)	\$ 880.00
					Total Sell:	\$ 23,280.88

Line #	Mfg	Qty	Part Number	Part Description	Sell	Ext Sell
--------	-----	-----	-------------	------------------	------	----------

Please Note the Following:

- Quote is good for 30 days from the date issued and is based on the information above.
- Installation Area will need to be in a clean and clear condition.
- Normal Installation hours are Monday-Friday 8:00 AM-5:00 PM
- Applicable tax will be added to the invoice
- Products are "Special Orders" and are not subject to cancellation or return

Payment Terms:

- A Deposit of 50% of the order is due upon order placement
- The remaining 50% of the order is due 10 days from receipt of final invoice
- Product lead times are based on manufacturer's schedules at time of order entry

We appreciate the opportunity to provide you this Proposal.

Customer Signature of Approval:_____

Name:_____Date:_____

STATE OF GEORGIA PROPOSAL



www.weinbergersbusiness.com

Proposed To:

Nikki Milburn
McDuffie County
210 Railroad Street
Thomson, GA 30824
706.597.7300

Purchase Order Made Out To:

Exemplis Corporation
In C/O Weinberger's Business Interiors
25090 Network Place
Chicage IL 60673
Contract # 99999-SPD0000100-0029

Weinberger 's Business Interiors

3023 Riverwatch Parkway
Suite G
Augusta GA 30907

Phone: 1 (706) 922-1374
Fax: 1 (706) 922-1377

Sales Person: Jennifer Duncan

Project: 1/9/2023

Line #	Tag	Mfg	Qty	Part Number	Part Description	Sell	Ext Sell
1			100	5213.UP	Freelance Four Leg, Armless, Upholstered Seat and Back, Grade 3, Standard Multi-Surface Glides. Black. Fully Assembled in a Carton	\$228.34	\$22,834.00
			~		No Selection		
			~		No Selection		
			~		No Selection		
			~		No Selection		
		GF			Standard Multi-Surface Glides		
		FB			FB		
		~			No Selection		
		~			No Selection		
		AC			Fully Assembled in a Carton		
		FABRIC			FABRIC		
		~			No Selection		

Line #	Tag	Mfg	Qty	Part Number	Part Description	Sell	Ext Sell
2				<i>FG3</i>	<i>Grade 3</i>		
				<i>X</i>	<i>X</i>		
			10	5214.UP	Freelance Four Leg, Black Fixed Loop Arms, Upholstered Seat and Back, Grade 3, Standard Multi-Surface Glides. Black. Fully Assembled in	\$256.76	\$2,567.60
				<i>~</i>	<i>No Selection</i>		
				<i>~</i>	<i>No Selection</i>		
				<i>~</i>	<i>No Selection</i>		
				<i>~</i>	<i>No Selection</i>		
				<i>GS</i>	<i>Standard Multi-Surface Glides</i>		
				<i>FB</i>	<i>FB</i>		
				<i>AC3</i>	<i>Black</i>		
				<i>~</i>	<i>No Selection</i>		
				<i>~</i>	<i>No Selection</i>		
				<i>AC</i>	<i>Fully Assembled in a Carton</i>		
				<i>FABRIC</i>	<i>FABRIC</i>		
				<i>~</i>	<i>No Selection</i>		
				<i>FG3</i>	<i>Grade 3</i>		
				<i>X</i>	<i>X</i>		
						Subtotal: \$ 25,401.60	

Line #	Tag	Mfg	Qty	Part Number	Part Description	Sell	Ext Sell
					Freight	\$0.00	\$0.00
					Sales Tax	\$2,032.13	\$2,032.13
					Design Service	\$0.00	\$0.00
					Installation	\$0.00	\$0.00
						Total Sell :	\$27,433.73

Please Note the Following:

- Quote is good for 30 days from the date issued and is based on the information above.
- Installation Area will need to be in a clean and clear condition.
- Normal Installation hours are Monday-Friday 8:00 AM-5:00 PM
- Applicable tax will be added to the invoice
- Products are "Special Orders" and are not subject to cancellation or return

Payment Terms:

- A Deposit of 50% of the order is due upon order placement
- The remaining 50% of the order is due 10 days from receipt of final invoice
- Product lead times are based on manufacturer's schedules at time of order entry

We appreciate the opportunity to provide you this Proposal.

Customer Signature of Approval:_____

Name:_____

Date:_____

Company:_____



January 24, 2023

David Crawley, Jr.
County Manager
McDuffie County, Georgia
210 Railroad Street
Thomson, Georgia 30824
Phone: (706) 595-2112

Subject: **Proposal for Leak Investigation & Consulting Services**
 Thomson McDuffie Government Center
 210 Railroad Street
 Thomson, Georgia 30824
 PM&A Proposal No. P23-024

Dear Mr. Crawley,

PM&A is pleased to propose leak investigation and consulting services for the Thomson McDuffie Government Center in Thomson, Georgia. The following scope of services is based on our preliminary correspondence and site visit with you.

Project Background

The subject property consists of two 2-story administrative/court buildings and a connected 1-story breezeway. It is our understanding that as-built architectural drawings are available for our review. Management reports a series of leaks through the exterior walls at window locations, at the roof drainage plumbing system, and potentially through the roof system.

It is our understanding that property management would like for PM&A to perform a leak investigation of the locations noted above and provide our recommendations for repair/next steps. PM&A shall also review existing drawings and provide our opinion as to the cause of the water intrusion. Our proposed scope of services is detailed below.

Scope of Services

We shall travel to the site to review the building envelope and any available architectural drawings. We shall observe the condition of the reported leaks. We will perform observations at the interior of the buildings, if readily accessible, where recent water intrusion events have occurred. We shall review plumbing connections from a portable ladder through the existing drop-ceiling grid at accessible locations. We will perform our field work for this investigation over one to two days and will rely on management to assist in coordinating access to the water intrusion areas.



We will perform observations of the façade from the exterior of the building from the ground, roof, and portable ladder. During our exterior observations, special attention will be given to wall building envelope systems, sealant joints, penetrations, and windows and associated flashing systems.

We shall perform a limited review of the roof system in the areas of the reported leaks to determine the overall condition.

Following the completion of our field services, we will provide a written report of the items above that will include an executive summary, our observations, conclusions, and recommendations. Our report will include photographs of typical and atypical conditions. We will include our opinion as to the source(s) of the water intrusion. We shall include a basic roof plan/site plan identifying specific observations. We shall include basic recommendations for the restoration of the building envelope in the leak areas.

Fee

We propose to perform the above scope of work for the lump sum fee of **\$7,410**.

Projected Schedule

We will coordinate our site visit with project management within three to four weeks of receiving written authorization to proceed. Our field work will likely take approximately one day to complete. The report will be provided within two weeks of the completion of our field work.

Assumptions/Exclusions:

- We have not included Design, Bidding, or Construction Administration services.
- We have not included drawing services.
- We have not included additional site visits outside those mentioned above.
- We have not included any water testing or destructive investigations.

If additional services are required beyond the scope of services as communicated within this proposal, we will perform these additional services on a Time and Materials basis according to our hourly rates which are available upon request. The fee amounts in this professional proposal shall be valid for a period of ninety (90) days from the date of the proposal until the date on which a Contract is entered into; this period may also be extended by a statement in writing as requested.



Authorization to Proceed

Should you find this proposal acceptable as described above please sign this proposal and return in its entirety to our office, or issue a Purchase Order or Contract to PM&A. When we are in receipt of the signed fee proposal, contract, or purchase order we will assume this as notice to proceed with scope of services for the referenced project.

Signature: _____ Date: _____

Title: _____

Organization: _____

We appreciate your consideration of the above proposal and the opportunity to be of service to your organization. Please do not hesitate to call or email us if we may be of further assistance in your evaluation and preparation of the referenced project.


Respectfully Submitted,

Phillip Pickens, PE, RRC, RRO
PM&A Engineering Services

STAFF REPORT

COMMISSIONERS' WORK SESSION: January 30, 2023

COMMISSIONERS' MEETING: February 1, 2023

DATE: January 30, 2023
TO: Board of Commissioners
FROM: David R. Crawley, County Manager 
ISSUE: Consideration to approve final road resurfacing list.

BACKGROUND: Moreland Altobelli Associates, Inc. has completed the review of the 2023 proposed Road Resurfacing Project list. Please see information provide below for cost of resurfacing. Due to installation of sewer infrastructure the yellow highlighted roads may need to be resurfaced at a later date.

Road Name	Beginning	Ending	Existing Surface	Length/Width	Description of Work	Proposed Project Cost
Crawford Street	Wrightsboro Road	Dead End	Asphalt	0.30 Miles 20' Width	Resurface/Stripe	\$48,115.00
West Street	Pope Street	Crawford	Asphalt	0.10 Miles 20' Width	Resurface/Stripe	\$16,044.00
Pope Street	Wrightsboro Road	West Street	Asphalt	0.33 Miles 20' Width	Resurface/Stripe	\$54,151.00
Short Street	Pope Street	Crawford Street	Asphalt	0.10 Miles 20' Width	Resurface/Stripe	\$16,304.00
Daniel Place	Wrightsboro Road	Dead End	Asphalt	0.20 Miles 20' Width	Resurface/Stripe	\$32,307.00
Adams Reeves Road	Luckeys Bridge Road	Tudor Road	Asphalt	1.2 Miles 20' Width	Patch, Level/Seal, Resurface, Stripe	\$328,392.50
Shields Pond Road	Countyline Road	Howard Road	Asphalt	1.45 Miles 20' Width	Patch, Level/Seal, Resurface/Stripe	\$355,642.50
Red Bud Road	Howard Road	Shields Pond Road	Asphalt	0.53 Miles 20' Width	Level/Seal, Resurface/Stripe	\$120,157.50
Mt. Pleasant Road	Wire Road	LOG Mile 2.38	Asphalt	2.38 Miles 21' Width	Patch, Level/Seal, Resurface/Stripe	\$581,435.00
Quail Farm Road	SR 17	Sand Hill Road	Asphalt	3.55 Miles 21' Width	Level/Seal, Resurface/Stripe	\$612,599.60
Mattie Harrison Road	Luckey's Bridge Road	Neals Mill	Asphalt	1.96 Miles 21' Width	Level/Seal, Resurface/Stripe	\$321,955.80
Langham Road	Happy Valley Road	County Line	Asphalt	1.67 Miles 21' Width	Patch, Level/Seal, Resurface/Stripe	\$304,998.60
Total				13.77 Miles		\$2,792,102.50

FACTS AND FINDINGS:

1. The total proposed cost for the roads highlighted in green is \$1,385,627.50.
2. LMIG Funding for 2023 is \$508,772.26.
3. The additional list of proposed road can be completed in 2024.

ALTERNATIVES:

1. The Board authorizes staff to bid the proposed list of roads.
2. The Board does not authorize staff to bid the proposed list of roads.

FUNDING: Transportation Investment Act and LMIG funds.

POLICY ANALYSIS: None

RECOMMENDATION: None.

ATTACHMENTS: None.

A. Travel

1. Lodging – Hotel charges shall qualify for County payment when they exceed a hundred (100) mile radius of the employee's place of work. All traveling personnel shall minimize the expense associated with hotel costs by contacting the hotel directly to make reservations procuring a government rate for qualified stays and avoiding supreme hotels. Lodging expenses will be paid directly to the hotel and using the rates provided by the General Service Administration website. If the rate exceeds the established per diem amount the excess amount will be deducted from the per diem for meals.

Employees who stay at a hotel/motel that is holding a scheduled meeting or seminar may incur lodging expenses that exceed the per diem rates. The higher cost may be justified in order to avoid excessive transportation costs between a lower cost hotel/motel and the location of the meeting. Manager's discretion is advised. Elected Officials will be reimbursed for their actual expenses.

When traveling in the State of Georgia, all travelers must use the hotel tax-exempt status form. Georgia sales and occupancy taxes (Section 48-13-51 of the Official Code of Georgia) charged for lodging with the State of Georgia do not qualify as a reimbursable travel expense under this policy.

Employees traveling with family members or other individuals are personally responsible for any damages to the hotel room, excessive phone usage, meals ordered, damaged or missing equipment or any other items/occurrences. Upgraded room accommodations that incur an additional charge are not allowed.

Overnight accommodations are permitted only for the maximum number of nights allowable in relation to the conference. Generally, this will be for the night following the first day of the event and prior to the last day of the event. For example, if the conference begins on Monday at noon and ends Thursday at noon, overnight accommodations will be permitted on Monday, Tuesday and Wednesday nights only. One night's stay prior to the conference is only permissible when travel time is required to reach the first session on time. Any additional nights stayed will be at the employee's expense. Exceptions to this policy will be permitted only in the event of unavoidable or extenuating circumstances, and such exceptions must be approved prior to the employee's decision to participate in the event.

2. Transportation – Travelers should use the most economical means of transportation. If a County vehicle is available, it should be used in lieu of a personal vehicle. If the employee elects not to use county vehicle which is available, mileage shall not be reimbursed. If a vehicle is not available and it is authorized by the County Manager the employee will receive mileage reimbursement using the General Administration Service rates. Elected Officials, Department Heads or Employees receiving a monthly auto allowance stipend are eligible for additional mileage reimbursement. This reimbursement is for any miles exceeding the hundred (100) mile radius of the employee's place of work. Advances for mileage will not be authorized.

Employees are the only individuals authorized to travel in County vehicles unless authorized by the County Manager or Elected Officials. If other family members or non-employees are traveling, the County vehicle is not available for use and the employee will only be allowed to receive mileage reimbursement at a reduced rate as established by the State of Georgia travel policy. The Board of Commissioners may establish a rate lower than the State of Georgia as a result of limited

budget availability for travel. **Whenever possible, employees should attempt to travel together to the same destination in one vehicle (preferably county vehicle).** Personal mileage will be excluded in determining the mileage for which reimbursement may be made. Claims exceeding mileage computed by the most direct route from the point of departure to destination must be explained on travel expense statement.

The authorized mileage rate is to include normal expenses incurred in the operation of a personal vehicle. In addition, parking and toll expenses will be paid for official travel in personal or county vehicles. A receipt must be provided for parking with the date and location of toll charges. Charges must be listed on the travel expense statement.

Reimbursement for transportation expenses incurred by the use of county vehicles will be limited to actual fuel expenses. County vehicles should be fully fueled before departure.

While driving your personal vehicle on County business, the County provides full liability coverage and personal immunity for the employee for damages and injuries the employee may cause to others. The County does not provide coverage for damages to your personal vehicle. The repair costs to a personal vehicle, whether or not they result from the traveler's acts, are not reimbursable. Under no circumstances will the County reimburse parking fines or moving violations.

If airfare or car rental is required, travelers will adhere to the guidelines provided by the State of Georgia.